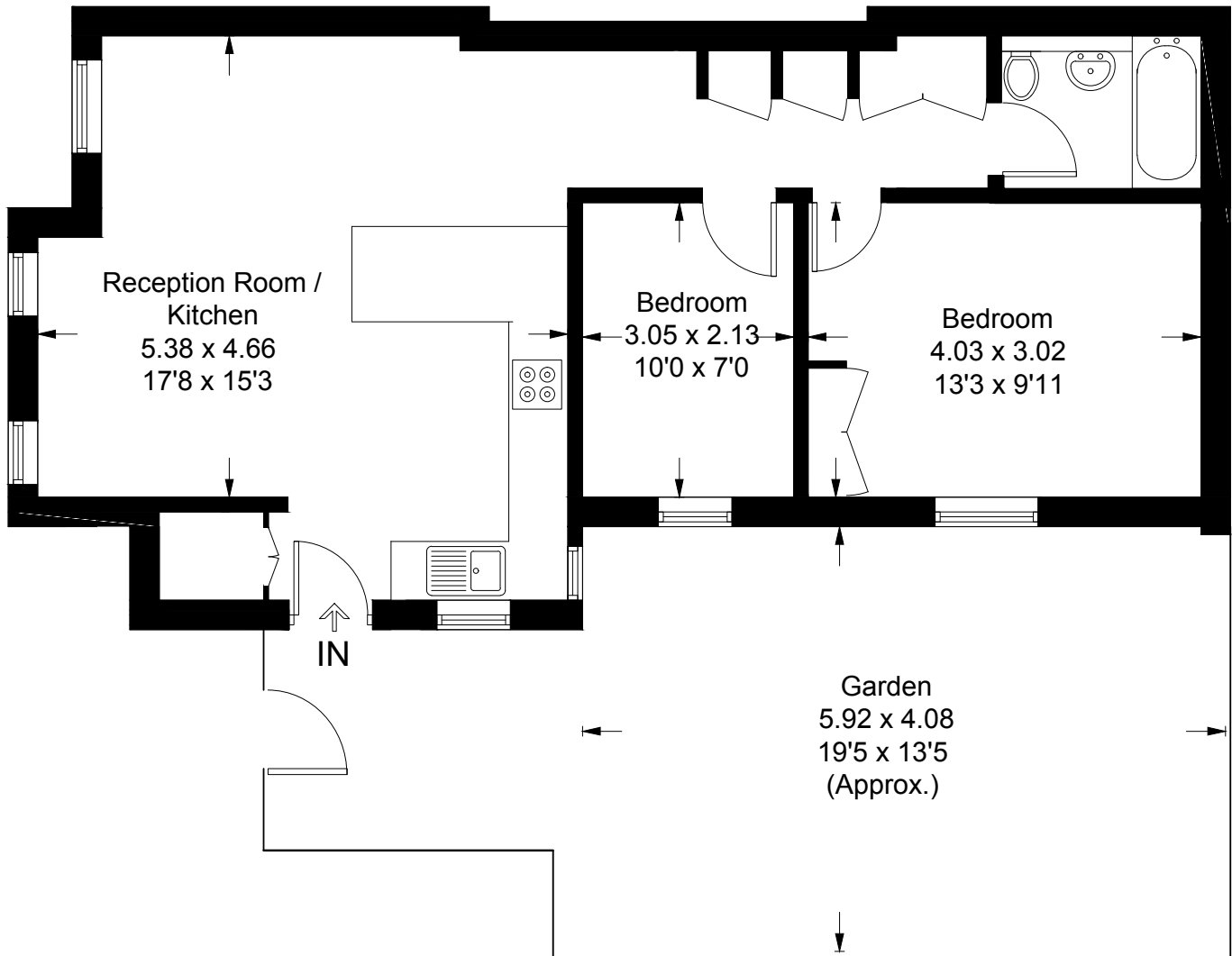


# Killarney Road, London, SW18

Approximate Gross Internal Area = 58.9 sq m / 634 sq ft



All measurements are in accordance to the RICS Code Of Measuring Practice.  
Measurements are approximate & only for illustrative purposes.

© Property Visual Ltd - info@propertyvisual.com - www.propertyvisual.com - 01580 241 428